

Why should I use this report?

This report will help you:

- Identify student needs by Performance Level and Scale Score
- Target groups of students
- Analyze students by MEAP Performance Level

MEAP Student Details Report

(sorted by Last Name)

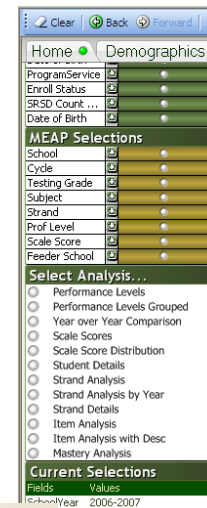
District Data Analyzer

<http://dda.kresanet.org/dda>



How to navigate DDA to produce this report

1. Open DDA and click on the MEAP tab.
2. Click on the year you wish to analyze at the top of the screen.
3. Select Analysis
 - a) click on Student Details
4. MEAP Selections
 - a) select the Testing Grade
 - b) select your School



Standard Selections	2007-2008 Student Details
SchoolName	Student Nu... LastName FirstName Gr... Gender Ethnicity Year Subject RS PL SS
Student Name	117006 AMES
UIC Number	117006 AMES
Local Student ID	117006 AMES
Grade Level	117006 AMES
Ethnicity	117007 AMMON
Gender	117007 AMMON
MealStatus	117007 AMMON
Program Elig...	117007 AMMON
Primary Disab...	117139 ARMENTA
ProgramService	117139 ARMENTA
Enroll Status	117139 ARMENTA
SRSD Count ...	117139 ARMENTA
Date of Birth	117039 BROCKELBANK
MEAP Selections	117039 BROCKELBANK
School	117039 BROCKELBANK
Cycle	117039 BROCKELBANK
Testing Grade	000117041 CAFFREY
Subject	000117041 CAFFREY
Strand	000117041 CAFFREY
Prof Level	000117041 CAFFREY
Scale Score	217033 CARVER-BA...
Feeder School	217033 CARVER-BA...
Select Analysis...	217033 CARVER-BA...
Average	62 1170102 523

At this point, the report should show you a list of your students sorted by Last Name in all subject areas. This gives you a quick glimpse of each individual student over all subject areas. You can **Hold** this group of students and then change over to the Item Analysis report (in Select Analysis area) to see which GLCE's these students are weakest in. You could then offer enrichment or remediation as needed.

Examples of Guiding Questions to use with the Student Details Report:

- How many students are within 5 Scale Score points above and/or below the cut-off score?
- Do these students share common characteristics?
 - Sub-group (socio-economic, minority, disabilities, ESL, male-female)
 - Intervention, strategy or program
- Have the students missed the same items on the test?
- Are the students having difficulty with common GLCEs?
- Are there strategies that could impact this group's performance?